



Poultry reproduction technologies



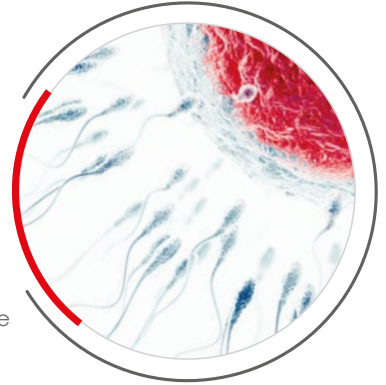
IMV TECHNOLOGIES. FOR LIFE.

INNOVATION. FOR LIFE.

In 1963, Robert Cassou founded IMV Technologies and set the standard for semen storage and insemination with the revolutionary «French Straw».

Since then, we've approached every new solution with the same innovative spirit as he did.

Today, we are still leaders in applied and disruptive technologies. We not only make things; we also improve things that already exist.



TECHNOLOGY. FOR LIFE.

Curiosity is one of our main drivers. We're never satisfied with the status quo. From semen collection to wireless ultrasound, this philosophy is why our technology is accepted and relied upon around the world.

Beyond technology, we create state-of-the-art techniques and programs to support its implementation.

SUSTAINABILITY. FOR LIFE.

Life is nothing without the planet we call home. That's why in everything we do, we push to implement sustainable practices that minimize our carbon footprint. It's not just our stated corporate responsibility. It is our life.

We challenge ourselves with new thinking that drives toward sustainable food sources for future generations. Through the use of our technologies, we believe land resources can be more efficiently managed and agriculture can become more sustainable. We aim to preserve Earth's abundance and beauty.

We have a genuine desire to make a positive impact.

REPRODUCTION. FOR LIFE.

For over 60 years, we've been at the leading edge of artificial insemination technology.

Over time, we've evolved to become more than an artificial insemination company. Our reproductive biotechnologies, which have become the standard across the globe, touch every aspect of reproduction, including collecting gametes, confirming pregnancy and managing data.

With an exponentially growing population, abundant and sustainable food sources are critical. Our technologies make this possible. This notion is a driving force behind IMV Technologies.

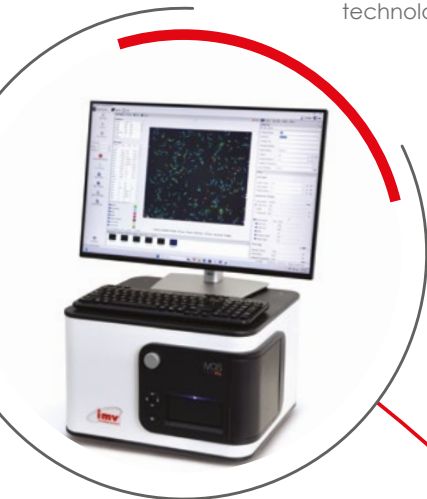
Poultry reproduction technologies

Artificial insemination plays an important role in the reproductive strategies of avian species. Throughout time, artificial insemination (AI) has been developed extensively to control and improve reproduction in avian species. The practice of AI has increased the effectiveness of breeding programs by optimizing the genetic potential of superior sires while decreasing the male: female ratio in turkeys, chickens, ducks, guinea-fowl and geese.

Artificial insemination has also greatly improved the reproductive success of intergenetic crosses involved in the production of mule ducks and hybrid raptors.


The use of AI in the production of these species eliminates the need for simultaneous presence of males and females from the same species to stimulate ovulation.

IMV Technologies' renowned expertise in Research and Development, along with the long-lasting partnership with public research institutions has resulted in a variety of unique products dedicated to artificial insemination of avian species.



Contents

Semen collection & analysis..... 4

-  Semen collection 4
-  Semen analysis 7 **NEW** **NEW**

Semen preparation & packaging 13

-  Semen preparation 13

Insemination 14

-  Insemination 14
-  Protection 17

Field application & training..... 18

Service 19

AspiComfort

AspiComfort is a poultry semen collector. It combines animal and human well-being.



Reference

028863 - Aspicomfort

Key benefits

Advantages

- No more risk of semen in the mouth
- No more unpleasant odors
- A mask can now be worn during collection

Features

- Small - light - compact
- Automatic start of the suction cycle ⇒ regularity of collection
- Harness adjustable to any type of body shape or usable off the body

Related products

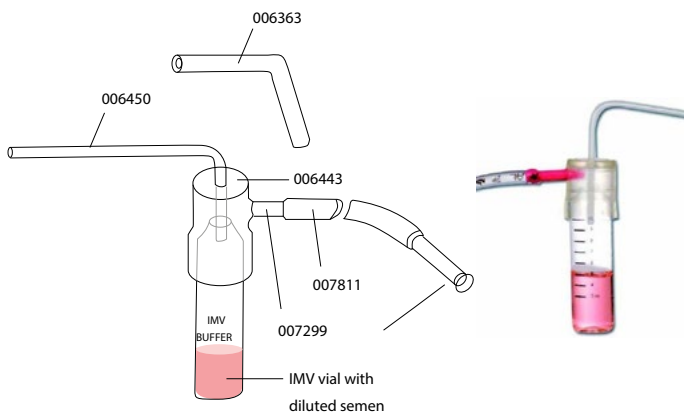
006442 - Disposable 5 ml semen collector

006443 - Disposable 10 ml semen collector

006450 - Tube for disposable collector 5 & 10 ml

Disposable semen collector without filtration

Disposable turkey semen collector without filtration 10 ml



References

006442 - Disposable semen collector 5ml

006443 - Disposable semen collector 10ml

Related products

Semen collection device without filtration, which includes:

006443 - Disposable 10 mL collector

006450 - Tube for disposable collector 5 mL and 10 mL

006363 - Gallus catheter

007811 - Tubing -

007299 - Suction tips

025115 - IMV graduated recisperme tube 13 mL

005263 - Clear plug for IMV recisperme tube

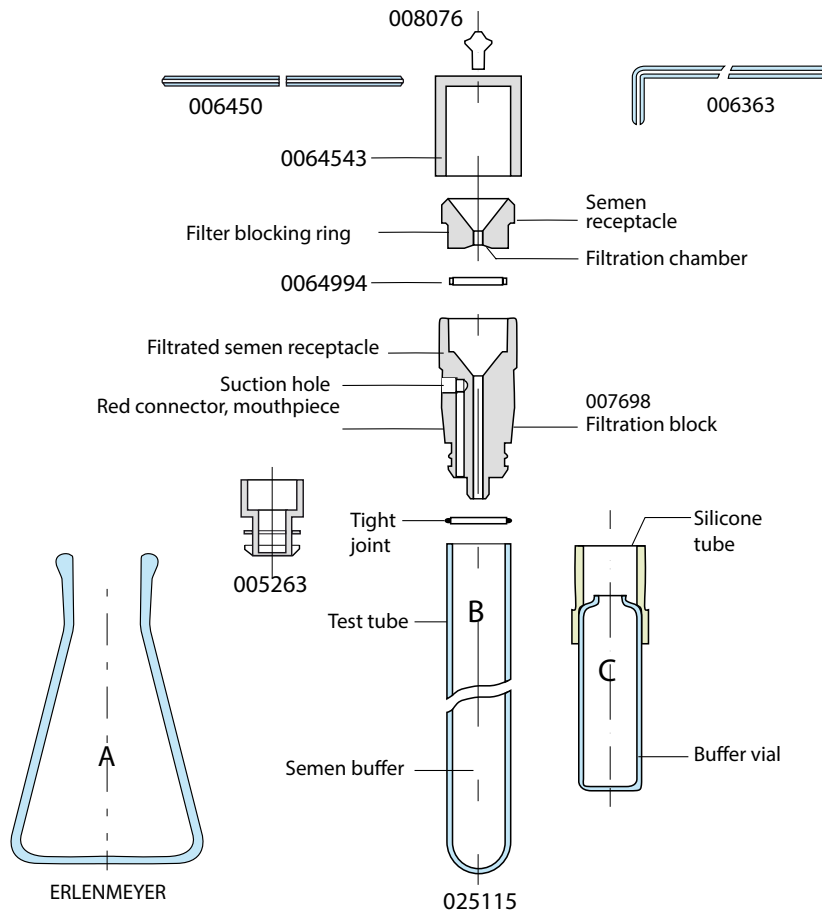
005338 - IMV semen mixer

Disposable semen collector with filtration

Disposable turkey semen collector with filtration 10 ml

Key benefits

- Online filtration



References

- 006442 - Disposable semen collector 5ml
- 006443 - Disposable semen collector 10ml

Related products

- Semen collection device with filtration, which includes:
- 007698 - Filtering block with cap
 - 006994 - Flask of 50 Mill filters
 - 006450 - Tube for disposable collector 5 mL and 10 mL
 - 006363 - Gallus catheter
 - 007811 - Tubing
 - 007299 - Suction tips
 - 025115 - IMV graduated Recisperme tube 13 mL
 - 005263 - Clear plug for Recisperme tube
 - 015483 - Filtering block holder for 5 ml and 10ml



Glass duck semen collector



Reference

005340 - Glass duck semen collector



Conservation double wall vessel



Reference

014721 - Graduated conservation double wall vessel 8 ml



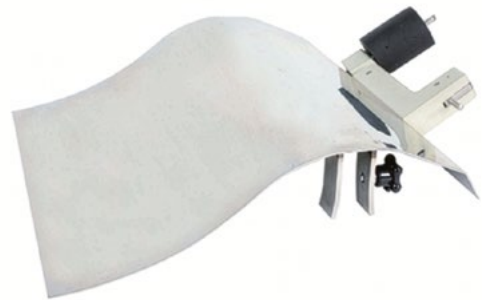
Shelf for cock with one leg-holder



Used to help hold the rooster during semen collection.

Reference

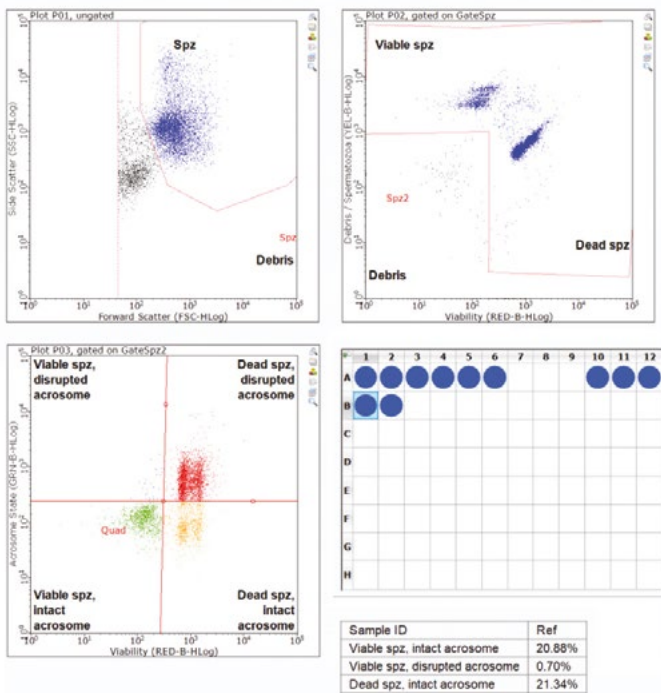
007158 - Shelf for cock with one leg-holder



EasyCyte

Thanks to its innovating patented microcapillary system, EasyCyte is easier to use than traditional flow cytometers and reduces the size of the samples and the space needed.

EasyKit Viability and Assess Membrane



Key benefits

- Unique ready-to-use flow cytometer dedicated to semen analysis
- Intuitive software package for semen analysis
- Scientific technical support
- Easy-to-use technology
- EasyKit: ready-to-use flow cytometry assays for time-saving and repeatable results



References

- 022841 - EasyCyte Plus/5HT Gen4 with IMV soft
- 022843 - EasyCyte Mini/5 Gen 4 with IMV soft

Related products

- 021771 - Microtube 500 µl
- 021768 - Microtube 1,5 ml
- 021773 - Multichannel pipette
- 021774 - Tip for multichannel pipette (per 960)
- 021775 - Container for multichannel pipette (per 100)
- 021776 - Pipette P2 from 0,1 to 2 µl
- 021777 - Tip for pipette P2 (per 1 000)
- 005530 - Pipette P20 from 2 to 20 µl
- 005208 - Tips for pipette P20 and P200 (per 1000)
- 005531 - Pipette P200 from 50 to 200 µl
- 005208 - Tips for pipette P20 and P200 (per 1000)
- 005529 - Pipette P5000 from 1 to 5 ml
- 005206 - Tips for pipette P5000 (per 334)

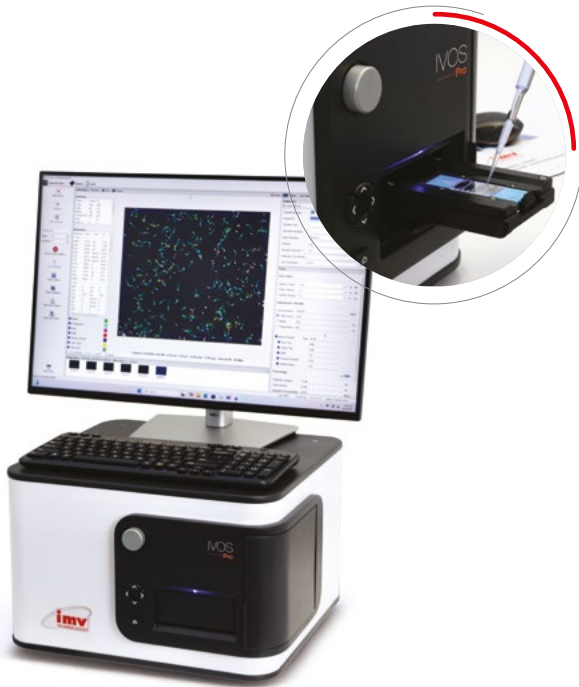
Accessories

- 024708 - EasyKit viability and concentration (480 analysis)
- 024864 - EasyKit mitochondrial activity (480 analysis)
- 025157 - EasyKit molecule oxidation D (480 analysis)
- 025293 - EasyKit viability and acrosome integrity (480 analysis)
- 025402 - EasyKit bacterial count kit (240 analysis)
- 025563 - Filter for EasyKit bacterial count kit (per 100)
- 024760 - EasyClean washing solution (per 4 flasks)
- 022162 - EasyBuffer A 100 ml flask (per 4)
- 023862 - EasyBuffer B 100 ml flask (per 4)
- 025438 - EasyBuffer C 100 ml flask (per 4)
- 022845 - Flow Cell Capillar for EasyCyte Plus/5HT Gen2,3,4
- 022846 - Flow Cell Capillar for EasyCyte Mini/5 Gen 4
- 023066 - EasyCheck kit for EasyCyte Plus/5HT and Mini/5

NEW

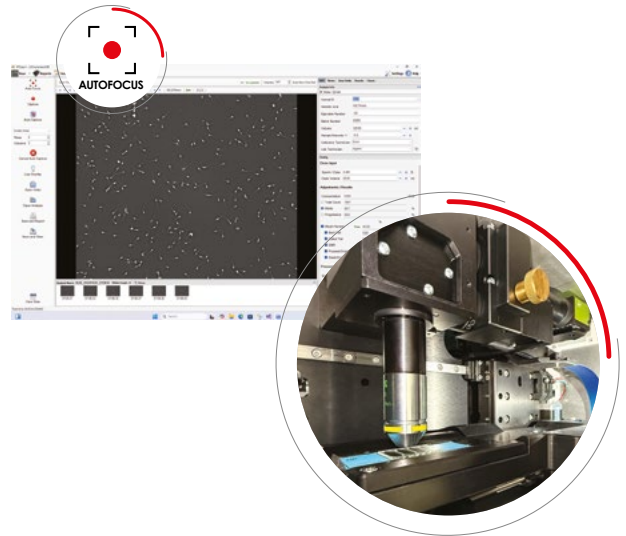
IVOS PRO

CASA system with unmatched accuracy for concentration, motility, morphology.



Key benefits

With IVOS Pro, streamline your operations by achieving maximum doses and quality through data accuracy and standardization powered by automation. You will significantly speed up your workflow and gain the valuable insights to optimize your stud management.



Maximize doses & ensure quality

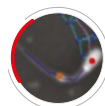
- Standardize semen analysis with autofocus, auto-illumination, and auto-brightness features
- Maximize economic gains through fertility and dose optimization

Workflow speed up

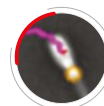
- Unmatched speed and workflow efficiency with minimal clicks, maximum automation, rapid stage movement and more sperm per field
- Reliability and minimal downtime thanks to fixed, locked and standardized optics features
- System integration with auto data transfer, reducing human error and saving time for increased efficiency

Optimize your stud management with data-driven insights

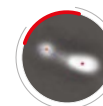
- Abnormality detection of spermatogenesis issues (as Indicators of Male Fertility Health) for better sperm quality
- Quick identification of health issues, heat stress, testicular degeneration problems, preventing compromised ejaculate from entering production and causing economic losses.



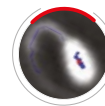
Distal droplets



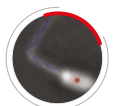
Proximal droplets



Retroverted tails (DMR)



Coiled tails



Bent tails

- Enhance data monitoring and efficiency with continuous, real-time monitoring of semen morphology quality
- Advanced abnormality analysis on different populations for higher accurate semen quality assessment

Reference

030230 - IVOS Pro

Related products

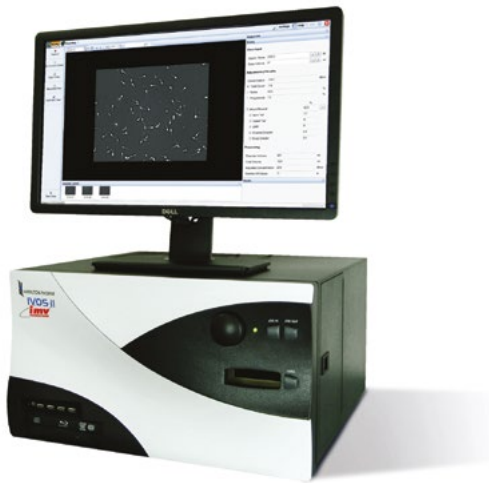
025107 - Leja 4 chambers slides

Accessories

- 022375 - Balance 4.2 kg precision 0.1 g with RS232
- 005530 - Pipette P20 from 2 to 20 µl
- 005208 - Tips for pipette P20 and P200 (per 1000)
- 028880 - Pipette P1000 from 100 µl to 1000 µl
- 028879 - Tips for Pipette P1000 (X1000)

IVOS II Ident

IVOS II Ident is an integrated system with fluorescence for animal semen analysis, for both dose production and quality control evaluation.



Reference

028506 - IVOS II Fluo (fluorescence)

Accessories

025097 - Barcode reader for IVOS
022375 - HTB electronic scale for IVOS
025454 - Subpopulation creation software
025455 - Individual track data software
023724 - Microlab 600 dilutor
006452 - Mini pipette for semen sampling
025456 - Viability software
018441 - IDENT stain kit
018632 - Viability stain kit

Key benefits

Quick and ease of use:

- «All-in-one» enclosed system
- Standardized procedures thanks to Leja 4 chambers slides
- Powerful and intuitive - highly configurable, automated heating stage
- Real-time data updating
- Fluorescence

Optimizes productivity and dose quality:

- Optimization of number of doses produced
- Automated morphology analyses
- Decision aid tool
- Data management and traceability
- Fluorescent capabilities

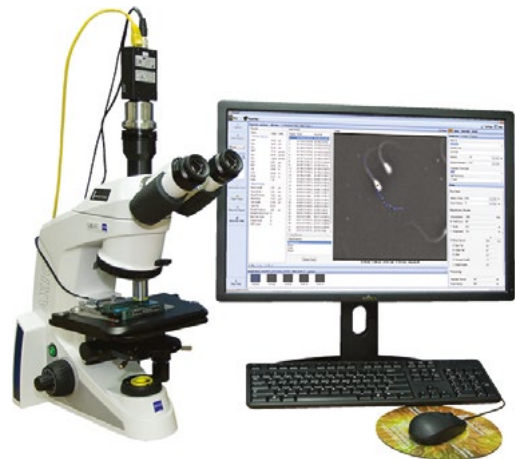


Related products

025107 - Leja 4 chambers slides - 20 µm
005530 - P20 Pipette (2 to 20 µl)
005208 - Translucid tips for pipette P200
005531 - P200 pipette (50 to 200 µl)
028877 - Boxes of 96 tips for P20 P200
028880 - P1000 pipette (100 to 1000 µl)
028878 - Boxes of 96 tips for P1000
028879 - Tips for Pipette P1000 (X1000)
005529 - P5000 pipette (1 to 5 mL)
005206 - Translucid tips for pipette type P5000
023639 - Multi pipette plus
023640 - Combitips for Multipipette
024504 - Dry water bath
021922 - Accu-beads
023862 - EasyBuffer B

CEROS II

Providing the same semen analysis accuracy as the IVOS range, the CEROS II CASA system is a cost-effective, space-saving alternative. Because the CEROS II processor is a separate unit from the optical component, the computer can be placed under the bench and at a distance.



References

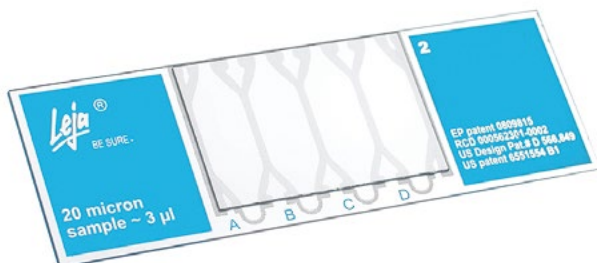
024905 - CEROS II
025107 - Leja 4 chambers slides

Accessories

025454 - Subpopulation creation
025455 - Individual track data
023724 - Microlab 600 dilutor
026691 - Footswitch for Ceros II
020100 - Filters for MP5000
005206 - Translucid tips for pipette type P5000
021768 - 1.5 ml microtubes
005529 - P5000 pipette (1 to 5 mL)
005531 - P200 pipette (50 to 200 µl)
005208 - Translucid tips for pipette P200
005530 - P20 Pipette (2 to 20 µl)

Leja slide

Leja slides are the most accurate fixed-depth slides on the market. Leja calibrated slides provide the accuracy and precision needed to reliably analyze semen. Leja slides facilitate analyses standardization.

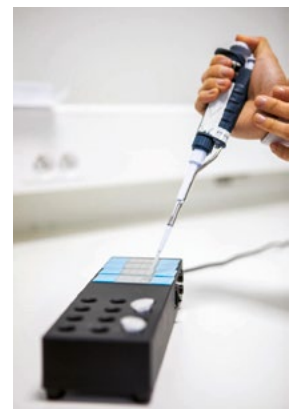


References

025107 - Leja 4 chambers slides
025108 - Leja 8 chambers slides
025095 - 8 chambers warming stage for IVOS II only

Key benefits

- Ensure fixed-depth chambers: availability of a Certificate of Analysis for each batch number
- High-tech materials and rigorous industrial processes: control of the raw materials used and best process used to ensure reliable analyses
- Reliability: controlled filling of chambers
- Accuracy and reliability of semen analyses
- Standardization of analyses
- Repeatable and objective measures
- Inspection and tracking of raw materials, toxicity checks, depth checks, 18-point visual inspection
- Easy-to-use slides



Trinocular Microscope

Microscopic analysis is the first step in semen analysis. With a microscope, laboratories can analyze gross and individual motility.

All microscope are with heating stage.

References

024374 - Trinocular microscope with phase contrast
016513 - 36 cm monitor with color camera

Consumables

005795 - Slides 76x26 (per 10x50)
030356 - Cover slides 18x18 (per 2 000)
005760 - Cover slides 22x22
017840 - 8ml flask immersion oil for microscope



Accessories

030369- Thermobloc - Tubes TDB-120, A-103
005530 - Pipette P20 from 2 to 20 μ l
005208- Tips for pipette P20 and P200 (per 1000)

AccuCell photometer

Photometer developed specifically for accurate measurement of ejaculate concentration.

Several modes:

- concentration
- concentration, calculation of the volume of media and the number of doses
- quality control with filter standards

Reference

014439 - AccuCell poultry photometer

Consumables

029099 - Cuvette for Photometers
015988 - 50 ml flask of NaCl solution 9/1000 (per 10)
002259 - 250 ml flask of NaCl solution 9/1000 (per 10)



Accessories

005529 - Pipette P5000 from 1 to 5 ml
005206 - Tips for pipette P5000 (per 334)
005531 - Pipette P200 from 50 to 200 μ l
005208 - Tips for pipette P20 and P200 (per 1000)
005555 - Rack for 7 micropipettes

NEW

CellPro

Photometer developed especially for accurate measurement of the concentration of ejaculates.

Reference

030246 - CellPro cock and turkey photometer

Consumables

029099 - Cuvette for Photometers
015988 - 50 ml flask of NaCl solution 9/1000 (per 10)
002259 - 250 ml flask of NaCl solution 9/1000 (per 10)

Accessories

005529 - Pipette P5000 from 1 to 5 ml
005206 - Tips for pipette P5000 (per 334)
005531 - Pipette P200 from 50 to 200 µl
005208 - Tips for pipette P20 and P200 (per 1000)
005555 - Rack for 7 micropipettes



Manual counting (hemacytometer)

References

005671 - Manual counter
005786 - Thoma cell, double squaring
020105 - Planed slides 22x22 mm (per 2x10)



Poultry media



Ready-to-use media for fresh poultry semen, adapted to turkey, chickens, guinea fowl and other avian species. Made for the dilution and the preservation of semen. Available with or without antibiotics.

References

- 025018 - NeXcell Poultry semen high protection medium
- 002263 - Poultry media - Antibiotic free - 1ml ampule
- 002262 - Poultry media - Antibiotic free - 2,5ml ampule
- 020070 - Poultry media - Antibiotic free - 4ml ampule
- 025880 - Extendyl antibiotic free - 5ml ampule
- 017059 - Poultry media - Antibiotic free - 25ml bottle



Duck media



Canadyl, duck semen extender, contains antibiotics.

Reference

- 002268 - Canadyl - 25ml bottle



TURKEY - Semi-automatic right M.R.A



Semi-automatic machine for filling poultry artificial insemination straws



Reference

007155 - Semi-automatic right 50 µl M.R.A. with counter

Key benefits

- With counter.
- Saves time and works faster than the manual method
- Patented pumping system ensures regular dosage
- Optimized sanitary security: the unit can be completely immersed in a liquid soap solution and the electric block can be showered



Accessories

- 007161 - Pump applicator for M.R.A. poultry filling machine
- 019250 - Motorization kit for M.R.A.
- 007693 - Transparent protective cover

Consumables

- 006929 - 70 mn straw
- 006445 - Sucking tube length
- 007692 - 12 stainless steel needles M.R.A.

Gallicomfort



Gallicomfort is a turkey insemination bench designed by an ergonomic specialist to help improve both human and animal welfare, while maintaining productivity levels.



Reference

027988 - Gallicomfort - insemination bench with all options

Key benefits

Put your staff's well-being first

Gallicomfort is designed to improve your staff's working conditions and reduce the risk of musculoskeletal disorders:

- Turkeys arrive at lifting height (no bending)
- Carry weight reduced by half
- Ergonomic arm rest
- Adjustable stool

Keep your efficiency in mind

Maintain high productivity levels

- 700 turkeys / hour with a team of 5 people
- Train staff quickly
- Train new employees in 1 to 2 weeks

Make animal welfare a priority

Gallicomfort is designed to improve both employees and animal welfare.

- Reduce the use of small pens, allowing for hens to move around freely.
- Gentle handling: turkeys are softly slid onto the bench for insemination. They are released calmly down a ramp after insemination.



AI gun for 1.2 ml straw with volumetric system

Volumetric poultry insemination gun. Multi-doses - for 1.2 mL poultry straws.

References

- 007163 - AI gun for 1.2 ml straw with volumetric system
- 005591 - Poultry straw 1.2ml



AI gun for medium straw with volumetric system

References

- 007164 - AI gun for medium straw with volumetric system
- 006926 - Medium guinea fowl hen «P» straws
- 006933 - Guinea fowl-hen sheath with insert



Pedigree hen

References

- 007173 - AI shelf for hens
- 007172 - Right leg-holder for hens
- 007171 - Left leg-holder for hens
- 026023 - Semen expeller bulb





Calving gown

With its long fitted sleeves and back cutouts, this gown is designed to be very strong and offer good protection. Available in two lengths.

References

| Green: | Clear: |
|----------------|----------------|
| 024265 - 140cm | 025588 - 140cm |
| 024263 - 155cm | 025586 - 155cm |



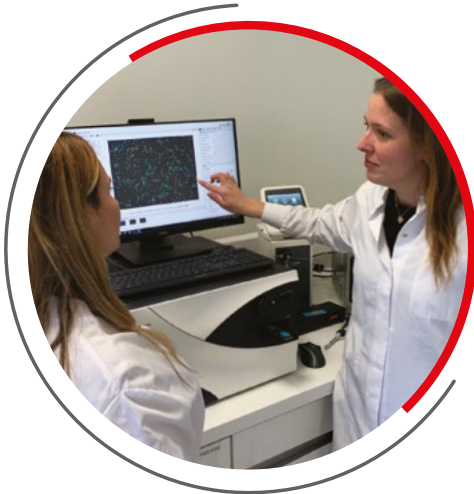
Overboot

Polyethylene overboots with 43x53 cm double elastics for heavy-duty use.

Reference

024242 - Overboot





Training

Our field Application specialists and scientists will train your team members on the different process of the laboratory to ensure that the final product will be of high quality. We offer essential and advanced training in one to two-days format, either at your facilities or at IMV Technologies offices.

References

Semen analysis

- 026346 - Installation training IVOS II Pro CEROS II 2 days on site
- 026347 - Installation training IVOS II fluo 3 days on site
- 026348 - Installation training EasyCyte 2 days on site

Poultry

- 024105 - Poultry reproduction training 3 days on site
- 028731 - MRA Maintenance Workshop ½ day

Support

We understand that the intensive nature of our 1 to 3-days training sessions can be overwhelming. To ensure your confidence and seamless implementation, we offer continuous support following the installation and training. This service can be done remotely.

References

- 026349 - Semen analysis expertise 1 day on site
- 028839 - Semen analysis expertise 1h remote

Our training offer

IMV Technologies provides tailored biological trainings, specific ready-to-use standard protocols and global approach to meet your needs in Reproductive Biotechnologies. Emphasizing a hands-on approach with practical exercises, we complement theoretical principles for optimal use of our products, extending our focus to provide personalized guidance. Our data-driven support beyond training helps you in overcoming challenges for your desired outcomes.

Equipment installations: biological and technical expertise

Our team composed of experts, PhD or vets will install your equipments that require biological expertise such as semen analysers (CASA, cytometer) or ultrasound scanners. Two main formats with several trainings per species are available.

Essential (One-day format)

Advanced (2-days+ format)



Number of trainings subjects



Contact us: academy@imv-technologies.com

More details: www.imv-technologies.com/training-programs

Download our complete training catalogue:

<https://www.imv-technologies.com/academy/field-application-service>



Since 1963, IMV Technologies has been manufacturing its own equipment and controlling over the entire process, encompassing design, installation, maintenance, and the machine's lifecycle until its retirement.



Equipment installations

Our team of experts will install your new equipment and ensure it is tailored to your needs, maximising efficiency.



Equipment training

After installing your equipment, our service technicians will train your team and ensure they know how to get the most out of the product. Each training is adapted to customer needs.

We offer three types of training:

- Onsite equipment training
- Equipment training for customers at the IMV Technologies corporate offices
- Remote training



After sales support

IMV Technologies' equipment is designed to last. To ensure the equipment always operates with optimal efficiency, we offer both preventive and corrective maintenance as well as maintenance contracts.

In the unlikely event of a breakdown, we offer three types of service:

- Telephone / Remote support
- Onsite repairs
- Product is returned to one of our service centers



Service Contracts

| | EXPERT CONTRACT | PREMIUM CONTRACT |
|--|-----------------|------------------|
| Preventive Maintenance Kit | X | X |
| Preventive Labor | X | X |
| Preventive technician's travel time | X | X |
| Hotline Free telephone assistance | X | X |
| Hotline Call priority | X | X |
| Software Upgrade | X | X |
| Spare parts (Corrective Maintenance) | 50% Included | X |
| Labor (Corrective Maintenance) | | X |
| Public holliday assistance | | X |
| Technical training during Preventive Maintenance | | 2 hours* |

*Excluding application training, please contact us for more information.

More details:
www.imv-technologies.com/customer-service



- Our IMV Technologies offices
- Main distributors

Our global network: more than 120 distributors supporting you worldwide

France

● **IMV Technologies Headquarters**
 +33 2 33 34 64 64
 61300 - L'Aigle
 welcome@imv-technologies.com

IMV imaging

16000 - Angoulême
 france@imv-technologies.com

Polysem

78120 - Rambouillet
 welcome@imv-technologies.com

The Netherlands

Leja
 Nieuw-Vennep - 2153 GN - North Holland
 info@leja.nl

NIFA Technologies

Leeuwarden - 8938 AS - Friesland
 www.nifa.nl

Scotland

IMV Technologies UK
 Bellshill - ML4 3NJ - North Lanarkshire

Spain

Imporvet
 Barcelona - 08540 Centelles - Catalonia
 int@import-vet.com

United States

IMV Technologies USA
 Brooklyn Park - 55445 - Minnesota
 contact@imvusa.com

IMV Technologies USA

Rochester - 55901 - Minnesota
 info@imvusa.com

Canada

Ro-main
 Saint-Lambert-de-Lauzon
 G0S 2W0 - Quebec
 info@ro-main.com

Brazil

IMV Technologies Brazil
 Campinas - 13030-300 - Sao Paulo
 contato@imvbrasil.com.br

China

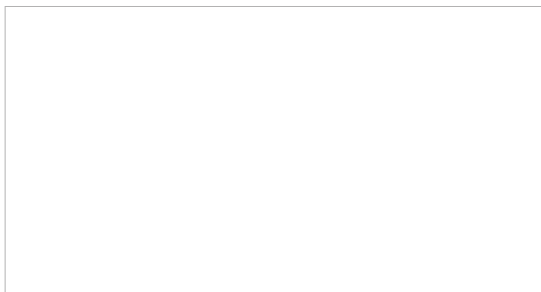
IMV Technologies China
 201203 - Shanghai
 contact@imvchina.com

Nelson Techno Medical Co

Changzhou - Jiangsu - China
 contact@imvchina.com

India

IMV Technologies India
 Gurugram - 122016, Haryana
 contact@imvindia.com



www.imv-technologies.com